

Wool

Different wool fibers

- Dyed Corriedale top 30 micron and 27 micron
- Corriedale top 28 micron ▪ Carded Corriedale
- Dyed Merino; 22 micron and 23 micron ▪ carded Merino ▪ Superwash Merino
- multi colors dyed wool top (Northern Lights)
- Coopworth (33 micron) ▪ Blue Faced Leicester ▪ White Masham top
- Lincoln top ▪ Falkland top ▪ Finn top ▪ Welsh Roving ▪ Swalesdale
- Organic natural white wool
- Wensleydale, Norwegian ▪ South African wool top ▪ Icelandic ▪ Mohair
- Alpaca, Yak, Llama
- Cachemire, Angora, silk, chameau and lamb
- Blend of Merino and silk
- Blend of wool, mohair and bamboo

Wool

ASHFORD

Corriedale carded sliver

30 micron

CODE	COLOR	½ lb(225g, 8on)	1 kg
WRSL	Natural White	12,50\$	44\$
LCS	Natural brown Light	12,50\$	44\$
MRSL	Medium	12,50\$	44\$
DRSL	Dark	12,50\$	44\$

Dyed Corriedale Top

30 micron

8\$ - 100 gr

14.00\$ - ½ lb (225g, 8 on)

48.00\$ - 1 kg

NEW 7 colors pack – 100gr

CODE	COLOR	100 gr
CSPSP	Spring (red, pink colors)	8\$
CSPSU	Summer (green, turquoise colors)	8\$
CSPAU	Autumn (orange, red, purple colors)	8\$
CSPWI	Winter (blue, purple, white colors)	8\$

NEW 5 colors pack – 100gr

CODE	COLOR	100 gr
CSPPA	Pastels (pastel colors)	8\$
CSPFF	Furry friends (wild animal colors)	8\$

Wool

ASHFORD

37 shades. This is a great fiber for easy spinning, needle felt and felting projects. Please note that the actual fibers are slightly darker and brighter than the shades presented below.



Cookie-DS018



Lemon-DS045



Lime-DS043



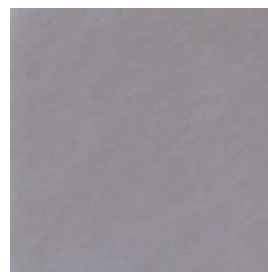
Bubblegum-DS010



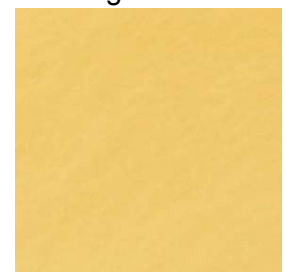
Lilac-DS044



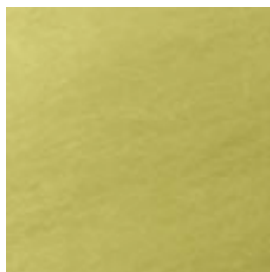
Candy Floss-DS040



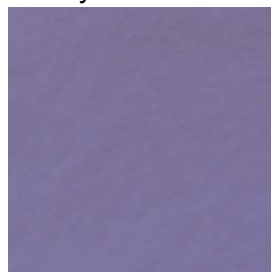
Grey-DS016



Cheesecake-DS003



Beansprout-DS019



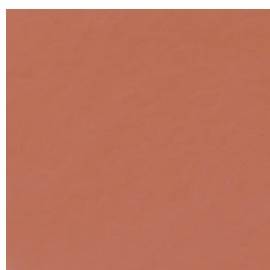
Blueberry Pie-
DS013



Grape Jelly-DS008



Marshmallow-
DS011



Peach-DS017



Yellow-DS027

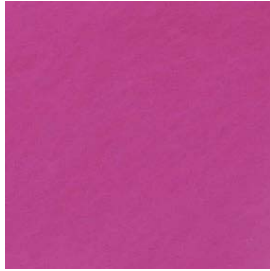


Green-DS022

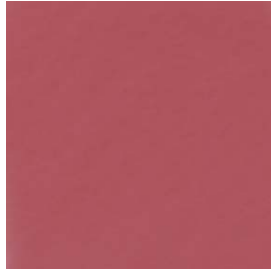


Lagoon-DS042

Wool



Magenta-DS023



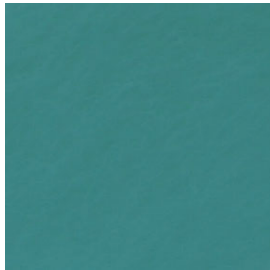
Strawberry
Shortcake-DS012



Nutmeg-DS009



Tangerine-DS048



Spearmint-DS007



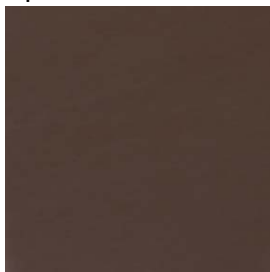
Turquoise-DS026



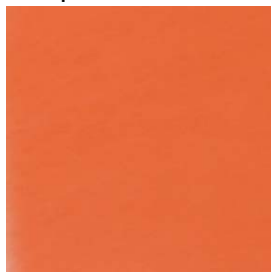
Purple-DS025



Chilli Pepper-DS015



Chocolate-DS020



Orange-DS024



Kiwi fruit-DS001



Blue-DS021



Plum Duff-DS005



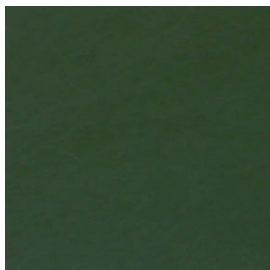
Scarlet-DS028



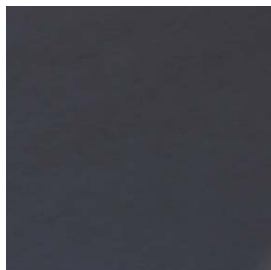
Liquorice-DS014



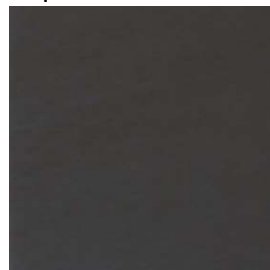
Pumpkin Pie-DS006



Green Tea-DS004



Indigo-DS041



Jelly Bean-DS002



Raspberry-DS047

Wool

Corriedale Top (suite)



Pansy-DS046



Skin-DS029



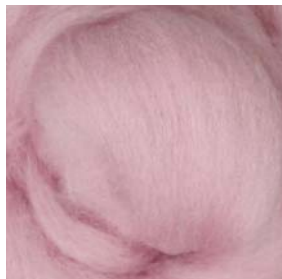
Ice-DS030



Apricot – DS031



Mint-DS032



Cupcake-DS033



Lavender-DS034



Honey-DS035

Wool

ASHFORD

Merino

22 micron

10,50\$ - 100gr

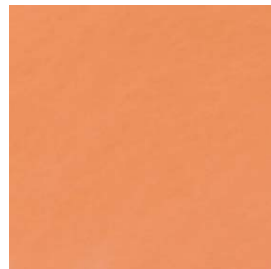
18.00\$ - ½ lb (225g, 8 on)

61.00\$ - 1 kg

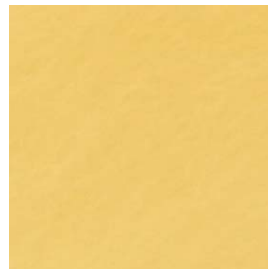
12 shades. This is a great fiber for easy spinning, needle felt and felting projects. Please note that the actual fibers are slightly darker and brighter than the shades presented below.



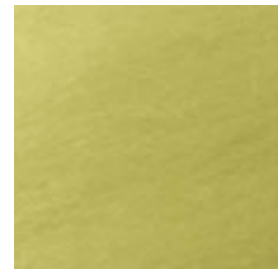
Scarlet-MS028



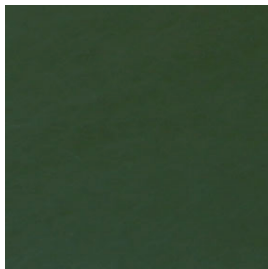
Tangerine-MS048



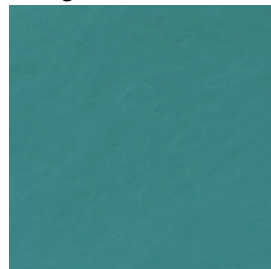
Cheesecake-MS003



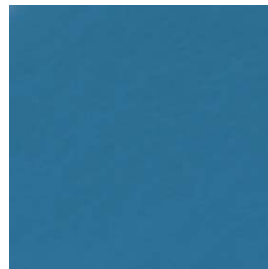
Bean Sprout-MS019



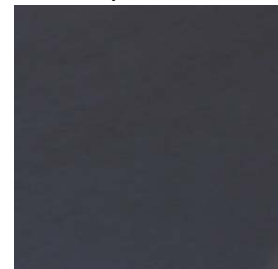
Green Tea-MS004



Spearmint-MS007



Lagoon-MS042



Indigo-MS041



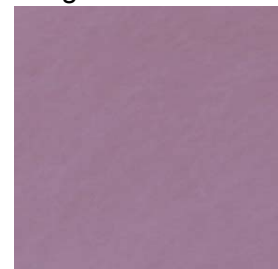
Blueberry Pie-MS013



Raspberry-MS047

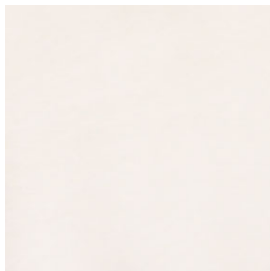


Strawberry Shortcake-MS012

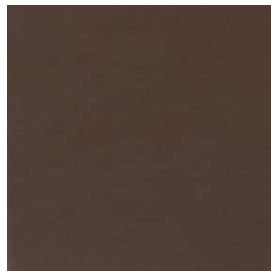


Grape Jelly-MS008

Wool



White-WMSL 16\$



Chocolate-MS020



Liquorice-MS014



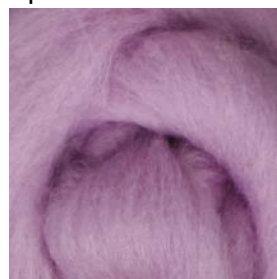
Ice-MS030 *NEW*



Mint-MS032
NEW



Cupcake-MS033
NEW



Lavender-MS034
NEW



Honey-MS035
NEW



Apricot – MS031
NEW

Wool

ASHFORD

Merino

CODE	COLOR	½ lb (225g, 8oz)	1 kg
WMSL	Natural White (Some vegetable matter, felts well) 22 micron	14\$	58\$
LMSL	Natural Light - 19 microns	16\$	63\$
MMSL	Medium - 19 microns	16\$	63\$
DMSL	Dark - 19 microns	16\$	63\$

Silk

Mulberry Silk Sliver

14\$ - 100 gm – SILKM100

110\$ - 1 kg (special order) - SILKM

Tussah Silk Sliver

14,50\$ - 100 gm – SILKT100

106\$ - 1kg (special order) SILKT

Silk Caps

15\$ - 80 gm– SILKC80

123\$ - 1kg (special order) – SILKC

Fibre

Tencel

9\$ - 100 gm- TENC100

66\$ - 1kg (special order) - TENC

Linen sliver

7,50\$ - 100 gm- LIN100

46\$ - 1kg - LIN (special order)

Bamboo sliver

7,50\$ - 100 gm - BAM

46\$ - 1 kg (special order) - BAM

Merino Superwash

WMSW

22 micron

Wool

machine wash
Natural White
65.00\$ - 1 kg (special order)

Silk/Merino Blend
20% silk / 80% merino
10,50\$ - 100 g
79.00\$ - 1 kg

Apricot - MS031
Blueberry – MS013
Bean Sprout – MS019
Cheesecake MS003
Chocolate – MS020
Cupcake – MS033
Grape Jelly - MS008
Green Tea – MS004
Honey – MS035
Ice – MS030
Indigo – MS041
Lagoon – MS042
Lavender – MS034
Liquorice – MS014
Mint – MS 032
Raspberry – MS047
Spearmint – MS007
Scarlet – MS028
Strawberry shortcake – MS012
Tangerine – MS048
Juniper – MS098
Pomegranate MS099
Saffron – MS100
Cinnamon – MS101
Pepercorns – MS102
Salvia – MS103
Mulberry – MS104
Poppy seed – MS105
Spice – MS106
Damson – MS107
Vanilla - MS108

Wool

ASHFORD

Corriedale

WCGP

(24-30 micron)

28\$- 1 kg (Special Order minimum 3 kg)

Wool Possum

25% Possum / 75% Merino

PMSL

173\$ - 1kg (Special Order)

Lincoln

(38-42 micron)

24\$- 1kg (Special Order minimum 3 kg)

English Leicester

WLG

(32-38 micron)

laine frisée - blanc naturelle

27\$- 1kg (Special Order minimum 3 kg)

Romney

(28-34 micron)

natural color: grey, brown, black

24\$- 1kg (Special Order minimum 3 kg)

Wool

LOUET

Corriedale Top

27 micron

12.3XX

6\$ - 2 on

18\$- ½ lb (225g, 8 on)

17 shades. This is a great fiber for easy spinning, needle felt and felting projects.



00 Fuchsia



05 Brown



10 Red



15 Charcoal



20 Dark Blue



25 Pink



30 Jade



35 Bright Blue



40 Grape



45 Black



50 Teal



55 Yellow

Wool



60 Olive Green



65 Burnt Orange



70 Warm Wine



75 Silver Grey



80 Pagoda Red

Wool

LOUET

5 colors bag of Corriedale and 3 colors of Merino and silk

42\$ (2 on of each color)

#1 - 12.001

Brown Corriedale
Yellow Corriedale
Silver Grey Corriedale
Red Corriedale
Grape Corriedale
Soft Rose Merino/Soie
Princess Blue Merino/Soie
Oriental Jade Merino/Soie

42.00\$ (2 on of each color)

2 - 12.011

Tan Corriedale
French Blue Corriedale
Violet Corriedale
Hunter Green Corriedale
Orange Corriedale
Glacial Green Merino/Soie
Garnet Merino/Sioie
Golden Hibiscus Merino/Soie

Wool

LOUET

Northern Lights

12-5XX

(special order)

32\$- ½ lb (225g, 8 on)

A spaced dyed 100% wool top, printed in multi colors with a repeating pattern. Available in a beautiful array of 26 different shades combinations. Spinning this fiber gives a wonderfully colored yarn. Keep looking for felting and needlefelt projects using this fiber.



00 Gummy Worms



02 Teddy Bear



04 Autumn Twilight



06 Cotton Candy



08 Cactus Flower



10 Camouflage



12 Picasso



14 Sunset



16 Desert Brush



18 Icy Winter



20 Ocean Waves



22 Popsicles

Wool



24 Toffee



26 Field Berries



28 Violets



30 Lollipops



32 Thunderstorm



34 Burning Bush



36 Rainbow



38 Tropical Skittles



40 Marmalade



42 Pastels



44 Circus



46 Wild Berry Jam



48 Fruit Loops



50 Grape Jelly

Wool

LOUET
Coopworth Roving

33 micron

bag of ½ lb (225g)

It is available in white, light, medium, dark and brown.



White Coopworth – 7.510
½ lb - 15\$
1kg – 56\$
A creamy white fiber



Light Coopworth – 7.520
½ lb - 15\$
1kg – 56\$
A light grey fiber



Medium Coopworth – 7.530
½ lb - 15\$
1kg – 56\$
A grey fiber



Dark Coopworth – 7.540
½ lb – 15\$
1 kg - 56\$
A dark grey fiber

Wool



Light Brown Coopworth – 7.525
½ lb - 15\$
1kg – 56\$
A brown fiber



Blue Faced Leicester Top - 7.585
(special order)
15\$
White top, that is very lustrous and soft. It is beautiful with a long 5 inch staple length.



Dark Blue Faced Leicester Top – 7.407
(special order)
20\$
The difference between the white and Dark Leicester is the color, but it almost feels softer still. The brownish color has the same attractive sheen as the white, very lustrous and soft.



Grey Gotland Top – 7.563
(special order)
21\$
Similar to the grey Icelandic, beautiful grey shades of soft fiber.



Corriedale Top - 7.515
(special order)
14\$
Natural white and 17 dyed colors. It is a great fiber for felting and spinning with a 28 micron count.

Wool



Lincoln Top – 7.560
(special order)
16\$

Our Lincoln is from England and is a very long staple length.



Falkland Top – 7.570
(special order)
16\$

Our Falkland top will remind you of a Corriedale.



Finn Top – 7.505
(special order)
17\$

Our Finn top will remind you of a soft Merino, but it is easier to spin due to the staple length.



Dark Welsh Roving – 7.575
(special order)
13\$

This English Welsh is very dark, and is comparable to our Coopworth fiber.



White Welsh Roving – 7.576
(special order)
13\$

This English Welsh is very similar to the dark, and is comparable to our Coopworth fiber.

Wool



Light Grey Swalesdale Top- 7.580
(special order)
12\$
A coarser wool fiber, easy to spin with a nice light grey shade.

LOUET

Shetland

15\$- ½ lb (225g)

This British combed top is super soft and easy to spin. Available in 4 shades:



White
7.403



Light Grey
7.401



Light
Brown
7.404



Black
7.402

Wool



Wensleydale – 7.405
(special order)
20\$

A very long fiber combed into a shiny top. It is one of the British wool breeds.



Norwegian Black – 7.557
(special order)
13\$

Combed top from Norwegian sheep. A very dark grey with a staple length of 6 inches.



South African Wool Top – 7.565
(special order)
16\$

This wool fiber is fine with a bounce to it. It is not identifiable to one specific breed, but is mainly made of Merino top and sorted to be a consistent 23 micron wool top.



Carded Corriedale – 7.543
15\$

Well carded. Easy for beginners to spin. Great for felting.



Carded Colored Merino – 7.542
15\$

Well carded. Lovely shade.

Wool



White Merino Top

7.500 - 17\$ (22 micron)

7.501 26\$ (18 micron)

One of our favorite products, this natural white 22 micron Merino top is also wonderful for dyeing and felting. Our merino top is so soft that it can be used for baby's garments.



Black Dyed Merino Top – 7.490

(special order)

20\$

A 22 micron combed top that is soft and easy to spin.



Superwash Merino Wool Top – 7.400

(special order)

20\$

This fiber has been treated to make it a machine washable fiber. It is also a 22 micron merino and great for baby garments due to its easy care – machine wash and dry.



Grey Icelandic – 7.550

(special order)

11\$

This fiber has a beautiful bluish-grey tone (natural) and is a double coated wool fiber. It felts well.



100% Angora - 7.235

(special order)

55\$

Combed top with a staple length of 3,5 inches (9 cm). Great for felting..

Wool



Lambswool/Angora 50/50 – 7.230
(special order)
48\$

This is a very soft blend, ideal for spinning and it felts very easily.



Yak Top – 7.160
(special order)
57\$

Dark, very soft fiber, combed. The undercoat is similar to Cashmere but darker, almost charcoal..



Cream Yak Top - 7.165
(special order)
57\$

Very soft, like dark yak top.

Wool

LOUET
Mohair

Bag of ½ lb (225g)

Our Mohair selection ranges in grade, type, colour and texture.



Doll Mohair Top – 7.132
(special order)
23\$

This extra long fiber is very suitable for doll hair but has other uses too. Spinning the 8" long fibers is not for beginners. But for doll hair it is very easy to braid.



Fine Mohair – 7.139
(special order)
29\$

This fiber from New Zealand is 27 micron, a beautiful very white fiber.



Honey Mohair – 18\$
(special order)
23\$

This is an adult mohair fiber in a natural soft honey color.



Black Dyed Mohair – 7.145
(special order)
29\$

A great spinning fiber it is a very nice deep shiny black.

Wool

LOUET
Alpaca

Bag of ½ lb (225g)

Alpaca fiber is available from many small and medium sized farms across North America and from Peru.



Medium Brown Alpaca - 7.059
(special order)
32\$
21 micron fiber



White Alpaca - 7.060
(special order)
32\$
21 micron young adult alpaca top



Almost White Alpaca - 7.061
(special order)
18\$
It is not as fine as our other alpacas.



Natural Black Alpaca - 7.070
(special order)
32\$
21 micron

Wool



Grey Alpaca - 7.056
(special order)
32\$
21 micron fiber



Brown/Grey Alpaca – 7.058
(special order)
32\$
21 micron fiber



Light Brown Alpaca - 7.057
(special order)
14.95\$
21 micron fiber



Brown Llama Top - 7.062
(special order)
½ lb (225g, 8 oz)
14.95\$
21 micron fiber

Wool



Baby Llama Top – 7.063
2oz
14\$



Yak Top – 7.160
2 oz
17\$



Cream Yak Top – 7.165
2oz
21\$
Very soft, like dark yak top, but in a lovely natural cream shade.



Baby Llama Top (super De-haired) – 7.064
2 oz
23\$
beautiful, creamy beige fiber. Super soft!.



Cashgora Top – 7.080
(special order)
2 oz
29\$
This top is a blend of Cashmere and Angora, a nice fiber to spin. It is extremely shiny and a real luxury fiber.

Wool



Light Brown Cashmere Top – 7.040
(special order)
2 oz
46\$

This top is a very fine fiber. Not very easy to spin, but an intermediate spinner should be able to handle this well-combed top.



Almost White Cashmere – 7.045
(special order)
2oz
48\$

This fiber is slightly easier to spin. The fibers are a little longer, not quite as fine as the brown. Our white cashmere is best suited for hand spinning. Many spinners concur with this assessment.



Bamboo/Bison – 7.041
(special order)
2 oz
40\$

A new Bison Blend fiber. The softest blend of Merino wool, Bamboo, Bison and Cashmere.
This fiber consists of 50% bamboo, 30% merino, 10% bison and 10% cashmere and is available in a 2oz package.



Cashmere/Silk 50/50 – 7.042
(special order)
2 oz
36\$

This fiber we can't keep in stock! It is truly a super fiber, very soft. The color is unique and the silk makes it a joy to spin.



Almost White Cashmere Top – 7.045
(special order)
2oz
48.00\$

This fiber is slightly easier to spin. The fibers are a little longer, not quite as fine as the brown. Our white cashmere is best suited for hand spinning. Many spinners concur with this assessment.

Wool



Natural Merino/Silk 80/20 – 7.172
(special order)

½ lb
29.00\$

This fiber is available in a natural color as well 10 dyed colors. This fiber is a blend of our 22 micron merino and tussah silk. The tussah is a high quality of very light tussah. The mix has a slightly creamy appearance.



Fine Brown Camel To – 7.180
(special order)

½ lb
40.00\$



Fine Baby Camel Top – 7.185
(special order)

½ lb
23.00\$

Our fine baby camel feels almost like cashmere. Very soft and easy to spin, the natural color is warm light brown.



Camel/silk Top 50/50 – 7.187
(special order)

2 oz
20.00\$

We took fine baby camel and blended it with Tussah silk. A wonderful, soft, shiny, brown fiber.



Low Camel Top – 7.190
(special order)

½ lb
16.00\$

This is separated from the fine camel top. This fiber is mostly used for carpet warp, strong and sturdy. It is a beautiful brown shade, good quality, not too hairy to spin.

Wool



Angora/lambswool top 50/50 – 7.230

2 oz

18.00\$

This is a very soft blend, ideal for spinning and it felts very easily. A very well combed mix, the fine merino lambswool blends well with the fine angora.



Angora Top 100% - 7.235

2 oz

22.00\$

Combed fine top, length of staple is 3.5". A wonderful top that is great for felting too..



Cultivated Silk Sliver – 7.311

(special order)

½ lb

43.00\$

This is available in a sliver, highly lustrous and slightly easier to spin than bricks. This fiber is bleached.



Cultivated Silk Sliver – 7.3112

2 oz

11.50\$

This is available in a sliver, highly lustrous and slightly easier to spin than bricks. This fiber is bleached.



Black Cultivated Silk Sliver – 7.312

(special order)

½ lb

48.00\$

This is available in a sliver, highly lustrous and slightly easier to spin than bricks.

Wool



Cultivated Silk Noils
(special order)
½ lb
29.00\$

This is a beautiful, clean silk noil which is easy to dye. Great quality for a great price. This fiber is bleached.



Tussah Silk Sliver – 7.320
½ lb
34.00\$

This is a honey beige appearance and it can be spun by itself or blended. We stock a light color tussah silk.



Tussah Silk Noils – 7.325
(special order)
½ lb
16.00\$

This is creamy in appearance and it can be spun by itself or blended. The fiber is clean and easy to dye.

Wool

LOUET Sample cards

Various wool fibers - 7.010
3\$

Coopworth/bfl/Alpaca/Shetland fibers– 7.0102
3\$

Louet Dyed Corriedale fibers – 12.004
3\$

Dyed Fiber Sample Card – 12.005
small samples of our Dyed merino/silk, Dyed Merino and Dyed
wool/mohair/bamboo blend fibers.
3\$

Northern Lights– 12.007
5\$

ASHFORD Sample cards

Corriedale Sliver – large – CCDS
8\$

Merino & Silk/Merino Sliver - CCMS
8\$

Natural Sliver - CCNS
5\$

Tekapo Wool yarn - CCAWY
5\$

Wool

LOUET

Dyed Wool/Mohair/Bamboo Top (80/20/20)

12.6XX

28.5 micron

This new blend consists of 80% dyed 28.5 micron wool, 20% natural mohair and 20% natural bamboo. Beautiful, soft colors.

35\$



01 Marine



02 Rosewood



03 - Aztec



04 Juniper



05 Purple Haze



06 Americana

Wool

LOUET

Merino/Silk Top

22 micron Merino

28\$ - ½ lb (225g)

8.25\$ - 2 on

Available in 10 shades, our popular 80/20 merino/silk blend is a lovely blend of Tussah Silk and 22 micron Merino. The fibers are lightly blended giving the silk clear visibility.



00 Soft Rose



10 Golden Hibiscus



20 Lichen



25 Oriental Jade



50 Princess Blue



60 Black



65 Glacial Green



75 Fuchsia



80 Garnet



90 Light Blue

*All prices are in Canadian dollars. Shipping and taxes are not included.
Prices for 2009-2010